

Distributor:



FLS – Floor Levelling Systems Ltd.
Box 26, Malvern, Worcestershire WR14 4XY UK

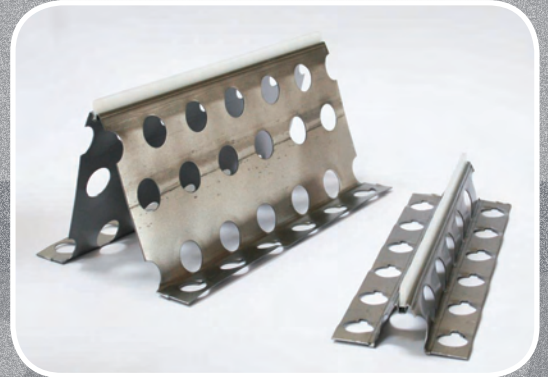
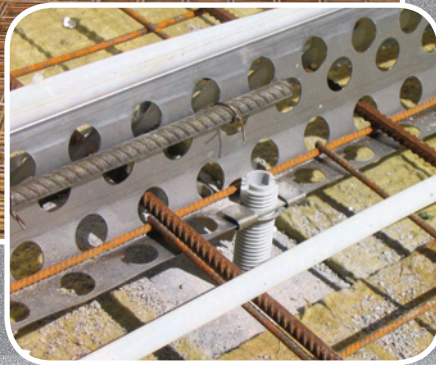
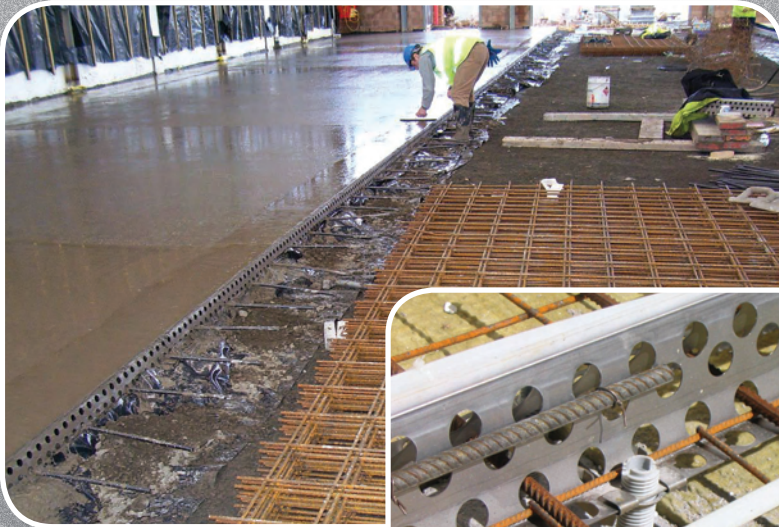
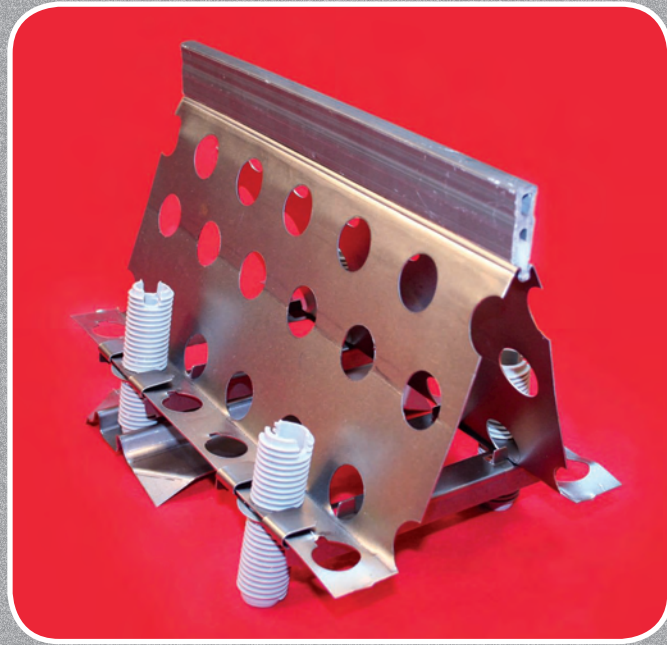
Tel: **07710 406906**

Fax: **01684 574161**

Email: **combiform@flslimited.com**

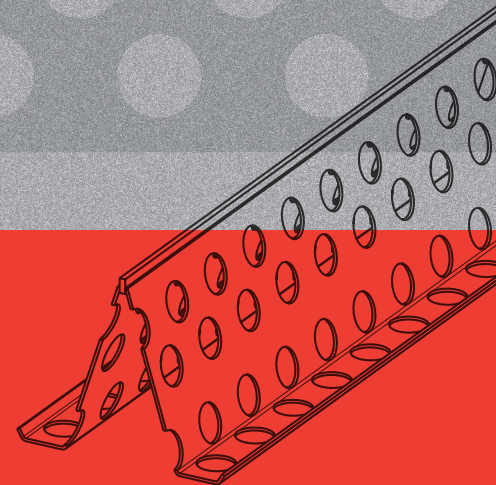
www.combiform.co.uk





A SUPERIOR BUT SIMPLE SYSTEM FOR CASTING CONCRETE FLOORS

🏗️ SCREED RAIL 🏗️ FORM SYSTEM 🏗️ DOWEL BAR HOLDER 🏗️ CONSTRUCTION JOINT



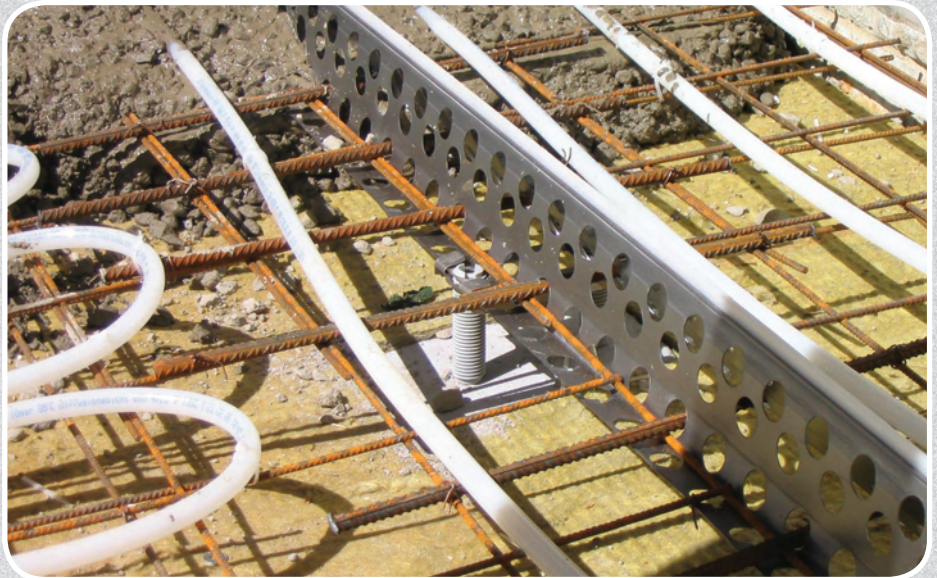
Some of the benefits of CombiForm are:

- ⬆ Available in seven heights
- ⬆ Leave-in-place screed rail and stopper
- ⬆ Suitable for all beddings
- ⬆ Allows continuous pouring
- ⬆ Brilliant simplicity – easy and flexible
- ⬆ Super flat floors
- ⬆ Superior strength
- ⬆ True construction joint – without cutting
- ⬆ Light weight – reduces the risk of industrial injuries
- ⬆ Saves on labour and production costs



CombiForm is perfect to use as:

- ⬆ Screed rail
- ⬆ Form system
- ⬆ Dowel bar holder
- ⬆ Construction joint



CombiForm has already been used for:

- ⬆ Heathrow Terminal 5 and external pave ways
- ⬆ Petrol station forecourts throughout Great Britain
- ⬆ Royal Worcester Hospital, PFI Project
- ⬆ Chemistry Block, Exeter University
- ⬆ Newton Abbott College
- ⬆ Mormon churches in hospital grounds in association with NHS Trusts
- ⬆ Nuclear Power Stations
- ⬆ Celtic Manor Golf Club, Newport South Wales
- ⬆ MOD Projects



**Royal Worcester Hospital,
PFI Project**



BP forecourt



**Celtic Manor Golf Club,
Newport South Wales**

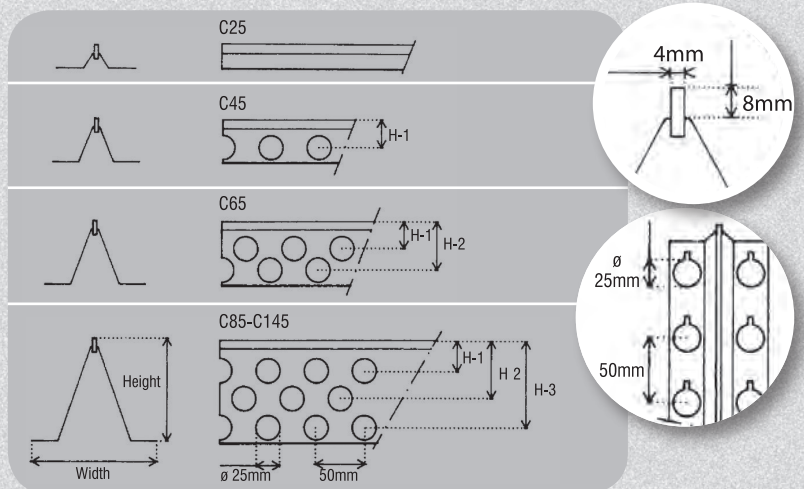
TECHNICAL INFORMATION & SPECIFICATIONS

Screed rail (measurements in mm)

Tolerances: Length +/-5mm and height +4mm/-2mm

Product	Height	Width	H-1	H-2	H-3	Weight (kg) 2.2m
C25	25	80	-	-	-	1.6
C45	45	90	30	-	-	1.7
C65	65	105	28	47	-	2.2
C85	85	115	31	49	67	2.5
C105	105	130	32	53	88	3.1
C125	125	135	32	64	109	3.7
C145	145	160	32	75	127	4.8

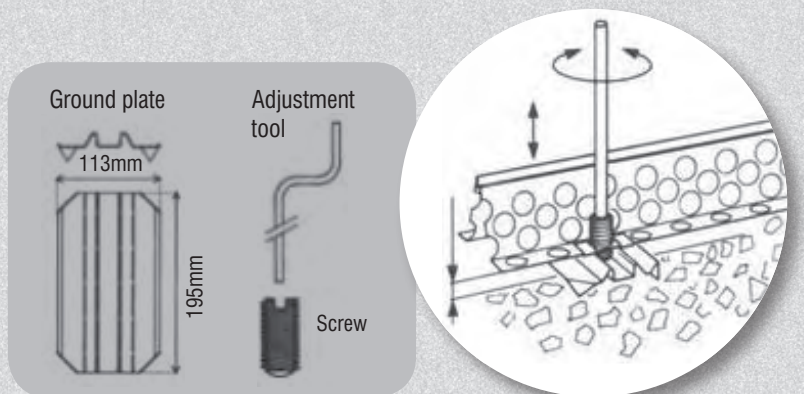
Material: Screed rail cold rolled steel DC01 and top strip Polyethylene.



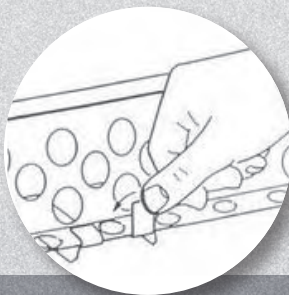
Accessories

Part	Size	Package
Screws	60mm	100 pcs
Screws	90mm	100 pcs
Ground plate	113x195mm	50 pcs
Top Extender	30x2200mm	1220 pcs
Adjustment tool	300mm	-
Adjustment tool	1300mm	-

Material: Ground plate metal and Top Extender Polypropylene



Locking clips are used to fix width and height available for C45-C145 screed rail



Top Extender

- ⬆ Can be left in or taken out
- ⬆ Will increase the cover
- ⬆ Acts as a saw cut
- ⬆ Cost and time saving



Settings

Vibration important!

Example: If the largest aggregate is 32mm

X should be
 $32\text{mm} \times 1.5 = 48\text{mm}$

